

2025
CATALOG

Ruffino Closets
Accessories Catalog



RUFFINO
CLOSETS







PULL OUT SHELF

| Matte Gold/Slate | | Matte Nickel/Matte Aluminum | |
|------------------|------------|-----------------------------|------------|
| 18" | 807.77.901 | 18" | 807.77.601 |
| 24" | 807.77.902 | 24" | 807.77.602 |
| 30" | 807.77.903 | 30" | 807.77.603 |
| 36" | 807.77.904 | 36" | 807.77.604 |



PULL OUT SHELF WITH JEWELRY

| Matte Gold/Slate | | Matte Nickel/Matte Aluminum | |
|------------------|------------|-----------------------------|------------|
| 18" | 807.77.981 | 18" | 807.77.681 |
| 24" | 807.77.982 | 24" | 807.77.682 |
| 30" | 807.77.983 | 30" | 807.77.683 |
| 36" | 807.77.984 | 36" | 807.77.684 |



LINGERIE DRAWER

| Matte Gold/Slate | | Matte Nickel/Matte Aluminum | |
|------------------|------------|-----------------------------|------------|
| 18" | 807.77.911 | 18" | 807.77.611 |
| 24" | 807.77.912 | 24" | 807.77.612 |
| 30" | 807.77.913 | 30" | 807.77.613 |
| 36" | 807.77.914 | 36" | 807.77.614 |



DEEP DRAWER

| Matte Gold/Slate | | Matte Nickel/Matte Aluminum | |
|------------------|------------|-----------------------------|------------|
| 18" | 807.77.921 | 18" | 807.77.621 |
| 24" | 807.77.922 | 24" | 807.77.622 |
| 30" | 807.77.923 | 30" | 807.77.623 |
| 36" | 807.77.924 | 36" | 807.77.624 |



SHOE FENCE

Chrome/Matte Nickel/MAL

| | |
|-----|------------|
| 11" | 547.52.221 |
| 17" | 547.52.222 |
| 23" | 547.52.223 |
| 30" | 547.52.224 |

Matte Gold/Slate/Black

| | |
|-----|------------|
| 11" | 547.52.921 |
| 17" | 547.52.922 |
| 23" | 547.52.923 |
| 30" | 547.52.924 |

DRAWER FACE ADAPTER ▶

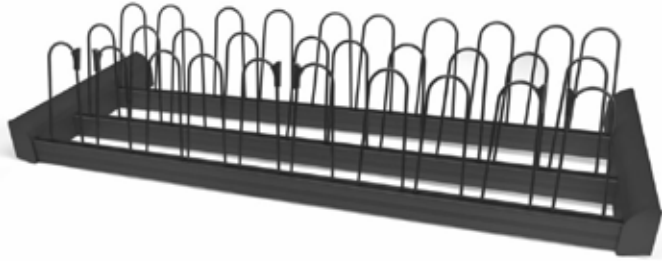
Cannot be used with Engage
Pant Rack





The image features five vertical fabric swatches of varying colors and textures. From left to right: a light beige textured fabric, a dark charcoal grey pebbled leather-like texture, a light tan smooth fabric, a bright white smooth fabric, and a light grey textured fabric. The text 'LUXURIOUS TEXTURES' is centered over the middle three swatches.

LUXURIOUS TEXTURES



SHOE ORGANIZER

| Matt Gold/Slate | | Matt Nickel/Matt Aluminum | |
|-----------------|------------|---------------------------|------------|
| 18" | 807.77.971 | 18" | 807.77.671 |
| 24" | 807.77.972 | 24" | 807.77.672 |
| 30" | 807.77.973 | 30" | 807.77.673 |
| 36" | 807.77.974 | 36" | 807.77.674 |



LAUNDRY ORGANIZER

| Matt Gold/Slate | | Matt Nickel/Matt Aluminum | |
|-----------------|------------|---------------------------|------------|
| 18" | 807.81.920 | 18" | 807.81.510 |
| 24" | 807.81.921 | 24" | 807.81.511 |
| 30" | 807.81.922 | 30" | 807.81.512 |
| 36" | 807.81.923 | 36" | 807.81.513 |

Finishes

| | | | | | |
|--------|---------------|-------------|------------------|-------|-------|
| Chrome | Matt Aluminum | Matt Nickel | Matt Gold | Slate | Black |
|--------|---------------|-------------|------------------|-------|-------|

Fabric

| | |
|--------------|-------|
| Beach | Slate |
|--------------|-------|



PANT ORGANIZER

| Matt Gold/Slate | | Matt Nickel/Matt Aluminum | |
|-----------------|------------|---------------------------|------------|
| 18" | 807.81.900 | 18" | 807.81.600 |
| 24" | 807.81.901 | 24" | 807.81.601 |
| 30" | 807.81.902 | 30" | 807.81.602 |
| 36" | 807.81.903 | 36" | 807.81.603 |



ENGAGE STORAGE BOXES

Beach/Slate Fabric

| | |
|-----|------------|
| 15" | 807.77.360 |
| 18" | 807.77.361 |
| 24" | 807.77.362 |

Fabric

| | |
|--------------|-------|
| Beach | Slate |
|--------------|-------|

ENGAGE LINE





TIE RACK 14"

All Finishes
807.67.203



BELT RACK 14"

All Finishes
807.67.213



SCARF RACK 14"

All Finishes
807.67.223



VALET ROD 14"

All Finishes
808.71.201

VALET PIN

All finishes
808.72.600

Finishes



ENGAGE LINE



STANDARD HOOK
Chrome
845.05.200



STANDARD HOOK
Matt Black
845.05.430



STANDARD HOOK
Matt Nickel
845.05.600



STANDARD HOOK
Matt Gold
845.05.730



COAT HOOK
Chrome
807.69.230



BROOM HOOK
Matt Aluminum
807.69.050



DOUBLE HOOK
Matt Nickel
807.69.240



WATERFALL HOOK
Matt Gold
807.69.960



TIE HOOK
Slate
807.69.370



BELT HOOK
Black
807.68.320

Finishes







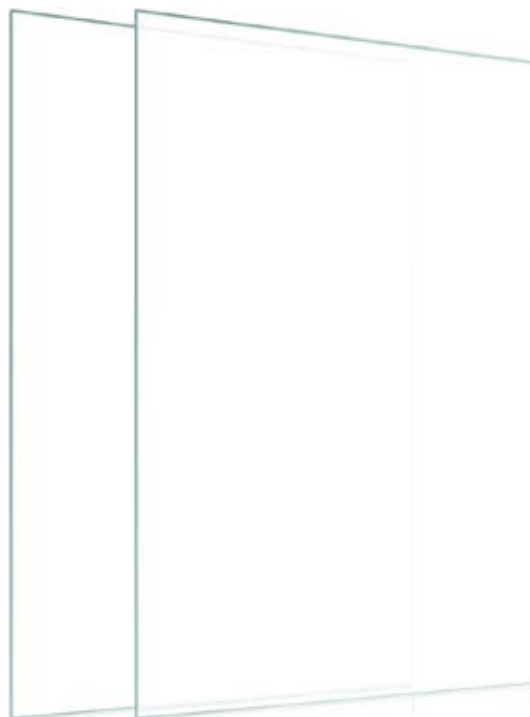
FULL ROTATION MIRROR 47"

- 805.73.022
- 805.73.622
- 805.73.322
- 805.73.922
- 805.73.422



FIXED MIRROR 47"

- 805.73.022
- 805.73.622
- 805.73.322
- 805.73.922
- 805.73.422



◀ GLASS & MIRRORS

prices vary by size and material

- Free Standing Mirrors
- Framed Out Mirrors
- Mounted Mirrored Doors
- Glass Tops



WINE PIN

Aluminum
Titanium



SHELF PIN

Aluminum
Titanium



HANG PIN

Aluminum
Titanium



CONTAIN BOX

390x465x125
250x465x255
390x465x255



CONTAIN TRAY

350x400x80
350x400x120



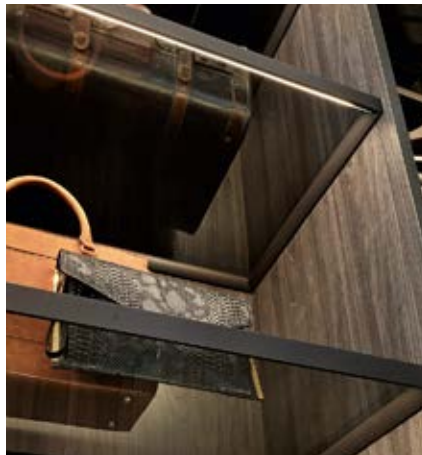
ALUMINUM FRAME SHELF

30mm H
36mm H



SHELF HANGER RAIL

1000 mm L
1050 mm L
Side Support



ELECTRICAL COMPONENT

Salices electric and lighting products like transformers and controls can be found in their comprehensive catalog.



BOTTOM FOR DRAWERS, SHELVES + METAL SHOE RACKS

PINS, CONTAINER, SHELVES



HANGING ELEMENTS

Bag Hanger
Scarf Holder
Tie Holder



HANGING ELEMENTS

Belt Holder
Swivel Hanger
Pull-out Hanger



HANGERS

Women's Suit Hanger
Women's Suit w/ Clips
Skirt Hangers
Men's Suit Hanger
Men's Suit w/ Rod
Trouser Hangers



HANGERS, RODS, RAILS

Coat Holder
Hanger Rod
Shepherd's Hook
Hanger Rail

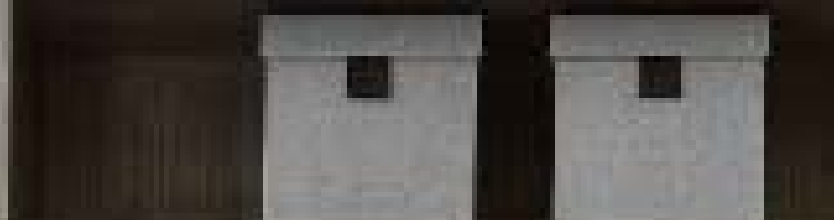
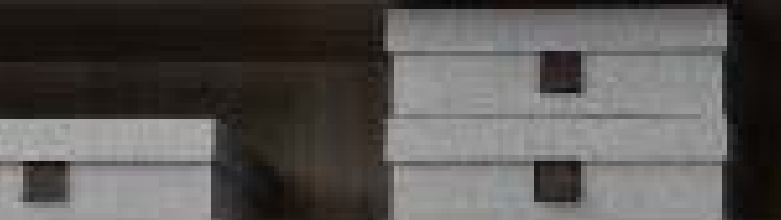
Salice Fabric Types



Genuine Leather Finishes



SOME HANGERS HAVE LEATHER SLEEVE OPTIONS AVAILABLE





4 SIDED ALUMINUM DRAWER
 Spacers available for door closure space
 52" 78" 128"



3 SIDED DRAWER WOOD FRONT
 Spacers available for door closure space
 52" 78" 128"



3 SIDED DRAWER GLASS FRONT
 Spacers available for door closure space
 52" 78" 128"



TROUSER/SKIRT HANGER
 Trouser
 Skirt



WIRED METAL SHOE RACK
 Metal Grey Brown



BED LINEN STORAGE
 Tasmania Grey

Salice Genuine Leather Finishes

| | | | | | | |
|------------|---------------|-----------|------------------|------------|--------------|-------------|
| Moka Brown | Elephant Grey | Flax Grey | Turtle Dove Grey | Mink Brown | Racing Green | Khaki Brown |
|------------|---------------|-----------|------------------|------------|--------------|-------------|

Salice Imitation Leather Finishes

| | | | | | |
|------------|---------------|------------|-------------|---------------|--------------|
| Moka Brown | Elephant Grey | Olive Grey | Taupe Brown | Tobacco Brown | Toffee White |
|------------|---------------|------------|-------------|---------------|--------------|

Salice Fabric Types

| | | | | | |
|---------------|-------------|-----------|----------------|-------------------|------------------|
| Tasmania Grey | Earth Brown | Flax Grey | Pumpkin Orange | Pearlescent Brick | Unbleached Linen |
|---------------|-------------|-----------|----------------|-------------------|------------------|



MULTIPURPOSE TRAY WITH DIVIDERS

1 divider 360mm
1 divider 410mm
3 dividers 360mm
3 dividers 410mm
4 dividers 360mm
4 dividers 410mm



RING + EARRING HOLDER TRAY

Ring-holder 360mm
Ring-holder 410mm
Earring+Ring Holder 360mm
Earring+Ring Holder 410mm
Earring-holder 360mm
Earring-holder 410mm
Earring+Ring Holder Horizontal
Ring Holder Horizontal



WATCH HOLDER TRAY

Watch-holder 360mm
Watch-holder 410mm
Watch-holder Horizontal



MULTIPURPOSE WITH REMOVABLE DIVIDERS

285x128x55 VE80CXMA01__B



SPECTACLE/5 DIVIDER TRAY

360x150x50mm
410x150x50mm

STORAGE TRAYS



HPL DRAWER INSERT WITH RING HOLDER

AVAILABLE IN WENDGE + WALNUT
360x150x50mm
410x150x50mm



HPL DRAWER INSERT WITH EARRING HOLDER

AVAILABLE IN WENDGE + WALNUT
360x150x50mm
410x150x50mm



HPL DRAWER INSERT WITH WATCH HOLDER

AVAILABLE IN WENDGE + WALNUT
360x150x50mm
410x150x50mm



HPL DRAWER INSERT WITH 3 DIVIDERS

AVAILABLE IN WENDGE + WALNUT
360x150x50mm
410x150x50mm



HPL DRAWER INSERT WITH BOTTOM

AVAILABLE IN WENDGE + WALNUT
360x150x50mm
410x150x50mm



**ENDLESS
OPTIONS**





SQUARE TRADITIONAL PULL

128mm 111.95.400
256mm 111.95.418



SQUARE MODERN PULL

128mm 111.95.472
256mm 111.95.490



MINIMALIST "U" PULL

128mm 111.95.436
256mm 111.95.454



LEATHER WARDROBE TUBE

35" 801.81.400
71" 801.81.401



LEATHER HOOK BOARD

44" 807.83.552



LEATHER JEWELRY TRAY

300.7CC.360

LEATHER COLLECTION

| Material | | | Finishes | | | | |
|----------|--------|--------|---------------|-------------|-----------|-------|-------|
| Winter | Oyster | Pewter | Matt Aluminum | Matt Nickel | Matt Gold | Slate | Black |



the **TOUCH** of **LEATHER...**



JEWELRY TRAY ORGANIZER

24" 807.87.102
36" 807.87.104



LEATHER DRAWER LINER

24" 807.87.132
36" 807.87.134



DIVIDER RAILS

24" 807.89.702
36" 807.89.704



DRAWER DIVIDERS

3" 807.87.540
5" 807.87.541



EARRING TRAY

807.87.179



RING HOLDER | WATCH PILLOW

807.87.190

807.87.189

Material

Winter

Oyster

Pewter

CONTOUR LINE



SUNGLASS DRAWER ORGANIZER

24" 807.87.112
36" 807.87.114



TOP TRAY

24" 807.87.562
36" 807.87.564



TIE/BELT ORGANIZER

24" 807.87.722
36" 807.87.724

Material

Winter Oyster Pewter





SOLO

19x13 807.73.012
 19x23 807.73.011
 19x35 807.73.010
 19x47 807.73.612



DUET

42x13 807.73.052
 42x23 807.73.051
 42x35 807.73.050
 42x47 807.73.652



SURFACE DUET

42x13 807.73.052
 42x23 807.73.051
 42x35 807.73.050
 42x47 807.73.652



QUARTET

19x13 807.73.012
 19x23 807.73.011
 19x35 807.73.010
 19x47 807.73.612



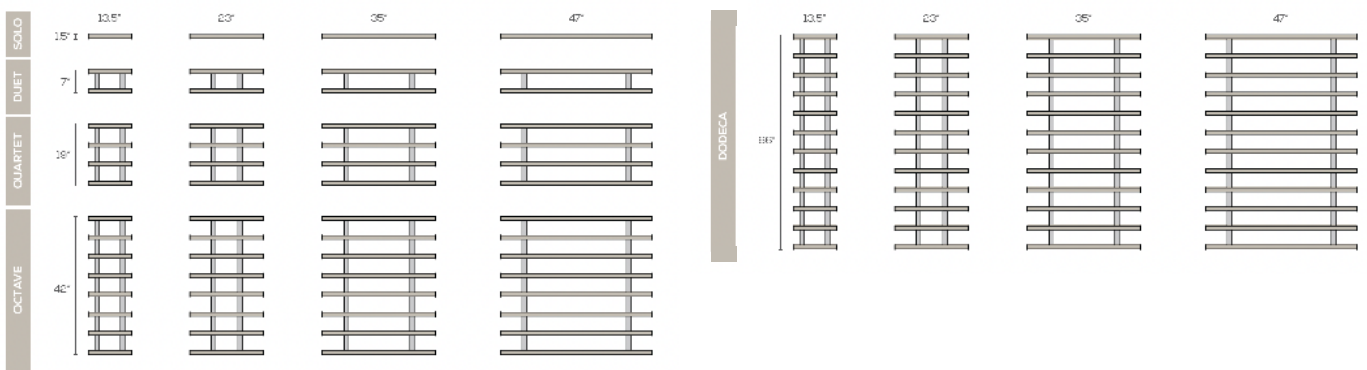
OCTAVE

42x13 807.73.052
 42x23 807.73.051
 42x35 807.73.050
 42x47 807.73.652



DODECA

42x13 807.73.052
 42x23 807.73.051
 42x35 807.73.050
 42x47 807.73.652



Material

Winter Oyster Pewter

Finishes

Matt Aluminum Matt Nickel Matt Gold Slate Black



MIRROR
Not available in Chrome
818.84.270



CONTAINER TRAY
White Only
818.84.720



PAPER TRAY
White Only
818.84.740



PENCIL HOLDER
White Only
818.84.740



TABLET STAND + WHITE BOARD
White Only
818.84.730



LEATHER POCKET ORGANIZER
Winter, Oyster, Pewter
818.84.460



EXTENSION POST
All finishes available
818.84.000



COAT HOOK
Matt Gold
807.72.830



TRIPLE HOOK
Black
807.72.250



JEWELRY HOOK
Matt Nickel
807.72.625



SHOE HOOK
Slate
807.72.360

SYMPHONY ACCESSORIES

| Material | | | Finishes | | | | |
|----------|--------|--------|---------------|-------------|-----------|-------|-------|
| Winter | Oyster | Pewter | Matt Aluminum | Matt Nickel | Matt Gold | Slate | Black |







PULL OUT HAMPER

Not available in 36" Black Bags

Chrome/Matt Nickel/Matt Aluminum/Black

| | |
|-----|------------|
| 18" | 805.52.231 |
| 24" | 805.52.233 |
| 30" | 807.52.235 |

Finishes

| | | | |
|-----------------|---------------|-------------|-------|
| Polished Chrome | Matt Aluminum | Matt Nickel | Black |
|-----------------|---------------|-------------|-------|



TIP OUT HAMPERS

| | |
|-----|------------|
| 18" | 547.43.311 |
| 24" | 547.43.315 |
| 30" | 547.43.315 |

Replacement Bags

| | |
|---------------------|------------|
| Small | 547.43.390 |
| Large | 547.43.391 |
| Extra Tip Out Hinge | 547.42.993 |



WIRE BASKET

| | | | |
|----------|------------|----------|------------|
| 14x18x6 | 547.38.232 | 14x18x17 | 547.38.238 |
| 14x24x6 | 547.40.232 | 14x24x17 | 547.40.238 |
| 14x30x6 | 547.41.232 | 14x30x17 | 547.41.238 |
| 14x18x11 | 547.38.236 | | |
| 14x24x11 | 547.40.236 | | |
| 14x30x11 | 547.41.236 | | |

All sizes also available in 12" and 16" deep baskets

Finishes

| | | | | | |
|-------|---------------|-------------|-----------|-------|-------|
| White | Matt Aluminum | Matt Nickel | Matt Gold | Slate | Black |
|-------|---------------|-------------|-----------|-------|-------|



PULL OUT PANT RACK

Chrome/Matt Nickel/Matt Aluminum/Black

| | |
|-----|------------|
| 18" | 805.58.231 |
| 24" | 805.58.233 |
| 30" | 805.58.235 |

Additional Hangers
Packs of 12-18

Finishes

| | | | |
|-----------------|---------------|-------------|-------|
| Polished Chrome | Matt Aluminum | Matt Nickel | Black |
|-----------------|---------------|-------------|-------|



BASKET LINERS

Canvas Bag Liner
547.36.489

Plastic Bottom Liner
547.98.436



OVAL ROD
Black



ELITE OVAL ROD
Slate



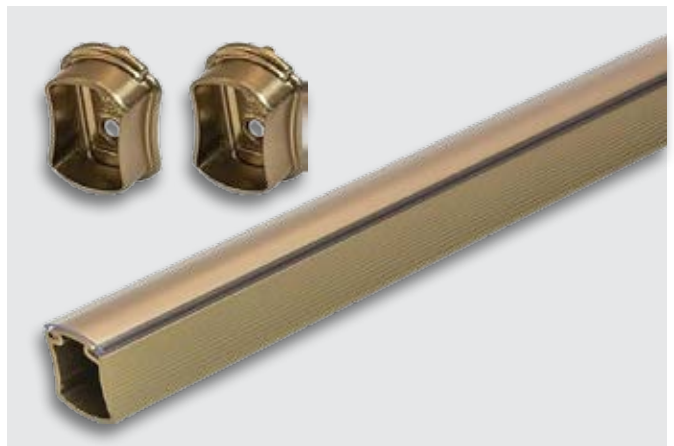
OVAL ROD
Chrome



ELITE OVAL ROD
Chrome



OVAL ROD
Matt Nickel



ELITE OVAL ROD
Matt Gold

CLOSET RODS



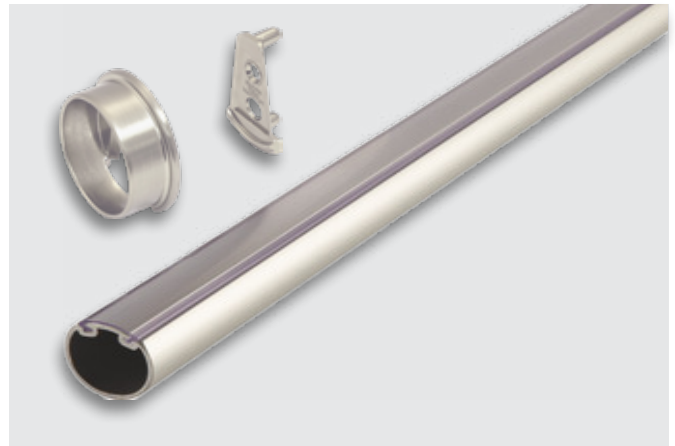
ROUND ROD
Black



ELITE ROUND ROD
Slate



ROUND ROD
Chrome



ELITE ROUND ROD
Matt Nickel



ROUND ROD
Matt Nickel



ELITE ROUND ROD
Matt Gold



MYCUBE

White, Black, Graphite
 Mini 9x16.5x13.5 35 lbs
 Standard 11x19.5x13.5 38 lbs



MYCUBE TOUCH

White, Black, Graphite
 Mini 9x16.5x13.5 35 lbs
 Standard 11x19.5x13.5 38 lbs
 Plus 16x19.5x13.5 50 lbs



MYCUBE CASE

White, Black, Green
 9x16.5x13.5 15 lbs



MYCUBE WALL SAFE

White
 18x14.5x6.5 36 lbs



MYCUBE MAX

White, Black
 Max 57x15.75x12 100 lbs
 Fire Max 57x20x14 205 lbs



MYCUBE CONNECT

White, Black
 11x19.5x13.85 38 lbs



FELT TRAY
 Beige, Black
 Open tray, 7 Section
 1x11x9.5



WATCH WINDER
 White, Black
 7x7x7



DOCUMENT FOLIO
 Green Only
 8x11



HANDGUN HOLDER
 Black Only
 6x4x7



FIREPROOF BAG
 Silver, Black
 Small 8.3x11x2.4
 Large 10.4x14.2x2.4



PASSPORT HOLDER
 Black Only
 5x4.25



PULL OUT IRONING BOARD

White 568.60.781
Slate 568.60.581



IRON AWAY IRONING BOARD

Electric
Non-Electric



STANDARD WARDROBE LIFT

Available in black/black or white/white upon request

Small 21"-26"
Med 26"-35"
Large 35"-48"



MOTORIZED WARDROBE LIFT

75 lb. Max Weight Capacity
50" Vertical Lift
Remote Included



SHEPHERD HOOK

One Size



PULL OUT TRASH

503.14.782 | RV-18PB-2 S-20
503.12.750 | RV-DM KIT-100

LIFTS + IRONING BOARDS





WATCH TRAY
All Colors



VALET TRAY
All Colors



TIE/BELT TRAY
All Colors



STANDARD JEWELRY TRAY
All Colors



SUNGLASSES TRAY
All Colors



STANDARD TRAY WITH EARRING
All Colors

Felt Colors



Leatherette Colors



JEWELRY INSERTS



GLASS MARKERBOARD
Color Options Available, Custom at Request



ACRYLIC SHELF DIVIDERS
Small 771.80.431
Med 771.80.436



CABLE GROMMET
631.26.311
Black, White, Brown, Tan, Almond, Rock, Gray



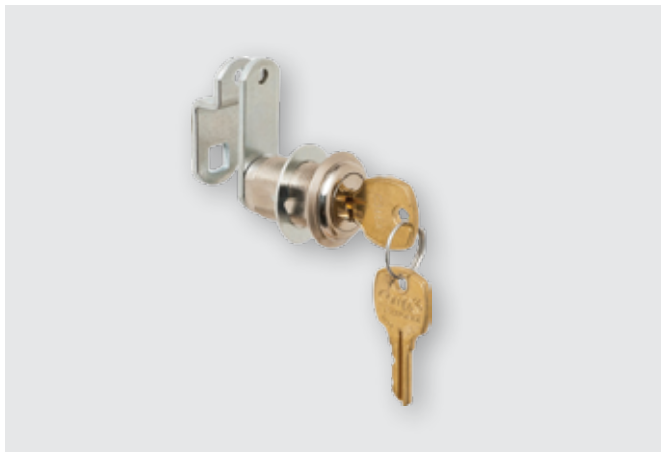
FILE ORGANIZER
Metal Built in File Insert
422.74.320
Legal



HIDE - A - DOCK
Black or Silver
822.09.406
2 outlets, 2 USB



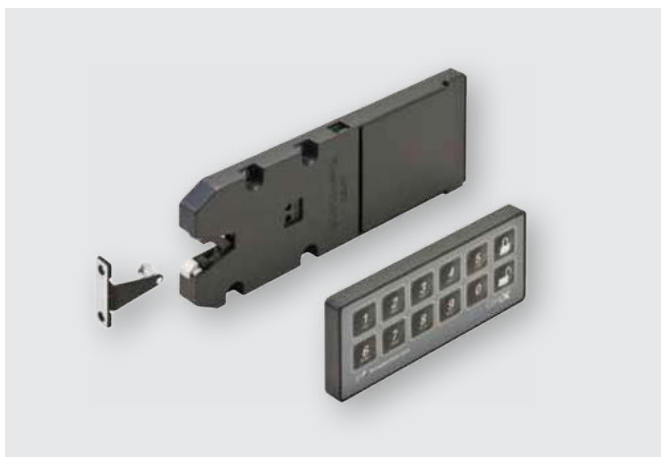
DRAWER OUTLET
Black or White
822.53.359
2 Outlets, USB Type A + USB Type C Chargers



CAM LOCK
Available in all finishes
235.10.810



GLASS DOOR LOCK
Black/Chrome, Black/Brass, Black/Polished Nickel
233.18.730



STEALTH LOCK
Black Only
237.56.350



PUSH MAGNET LATCH
Black, White, Brown, Cream
245.61.730



GANG LOCK
234.87.818 18" | 234.87.836 36"
234.87.827 24" | 234.87.845 48"



MAGNETIC LOCK
White Only

LATCHES + LOCKS

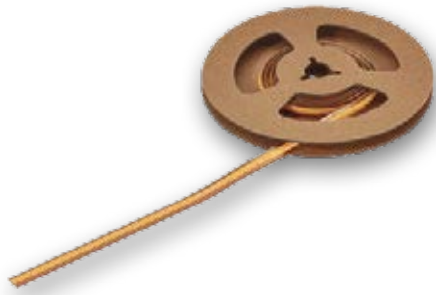






ELEGANT LIGHTING





ROPE LIGHTING

3000k Warm White Light
196"/5m roll: \$370 Full Roll Cost
12 V 833.74.501
24 V 833.76.521



PUCK LIGHT

3000k Warm White Light
Silver Standard
833.74.231



SENSOR

Silver
Touch Free 833.89.127
Door Switch 833.89.128



MOTION DETECTOR

Silver
833.89.127



BATTERY OPERATED LIGHT

4000k Light
833.87.021



6-CHANNEL REMOTE

Works for 12v & 24v
833.89.121



BLUETOOTH REMOTE

Pairs with 6-way distributor
850.00.040



WIRELESS WALL SWITCH

Single 850.00.025
Double 850.00.026



STANDARD DRAWER BOXES

Pre-Finished Bottoms, Undermount Slides
Depth Sizes 12", 15", 18", 21"
Width Sizes 18", 24", 30", 36"
Height Sizes 2", 4", 6", 8", 10", 12" 15"



DOVETAIL DRAWER BOXES

Pre-Finished Bottoms, Undermount Slides
Depth Sizes 12", 15", 18", 21"
Width Sizes 18", 24", 30", 36"
Height Sizes 2", 4", 6", 8", 10", 12"

These Drawers could be scoop hamper drawers, Pull Out drying racks, Drawers with Dividers, Extra Large drawers (15" H+, 30" D+ etc) Or a cut out in the back or front.



SPECIALTY DOVETAIL DRAWERS

LG Scoop Hampers
Depth Sizes 12", 15", 21"
Width Sizes 18", 24", 30", 36"
Height Sizes 2", 4", 6", 8", 10", 12" 15"



SPECIALTY DOVETAIL DRAWERS

Pull-out Hamper
Depth Sizes 12", 15", 21"
Width Sizes 18", 24", 30", 36"
Height Sizes 2", 4", 6", 8", 10", 12" 15"



UNDERMOUNT SLIDES

Soft Close, Full Extension
Slides come in 12", 15", 18", 21"



SIDEMOUNT SLIDES

Soft Close, Full Extension
Slides come in 14", 16", 18", 22"

DRAWER BOXES + SLIDES



PAINT GRADE REAL WOOD

3-week lead time. Custom Sizes to order.
Soft Maple/Knotty Alder. On-Site Finishing.
Specify style choices. 6 $\frac{1}{8}$ " fronts are flat slab pieces



STAIN GRADE REAL WOOD

Finish Cabinet Drawer Fronts. Everwood.



5-PIECE MELAMINE DRAWER

3-week lead time. Custom Sizes to Order. Variety of Colors
No 5-piece style for a 6 $\frac{1}{8}$ " H Flat Front. Bywater.



THERMOFOIL DRAWERS

3-week lead time. Custom Sizes to order.
Variety of Colors. Brushy Creek.



WHITE STANDARD FLAT FRONT

3-week lead time. Custom Sizes to Order. Variety of Colors
No 5-piece style for a 6 $\frac{1}{8}$ " H Flat Front



WHITE WOODGRAIN FLAT FRONT

3-week lead time. Custom Sizes to order.
Variety of Colors.



**ENTIRELY
CUSTOM**





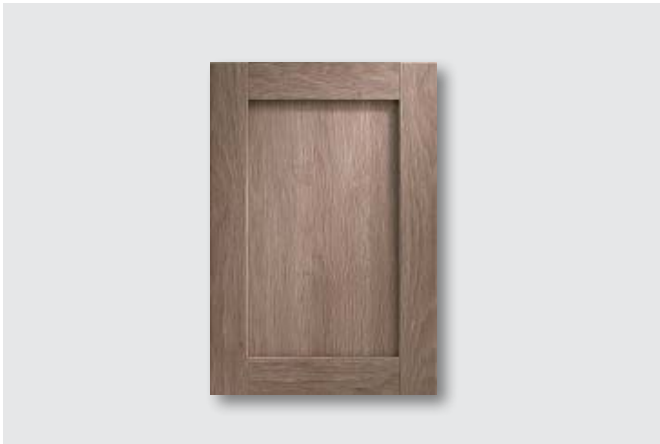
PAINT GRADE REAL WOOD

3-week lead time. Custom Sizes to order.
Soft Maple/Knotty Alder. Everwood.
Small Doors <48" H, Large Doors >48" H



STAIN GRADE REAL WOOD

Finish Standard Height Cabinet Door. On-Site Finishing.



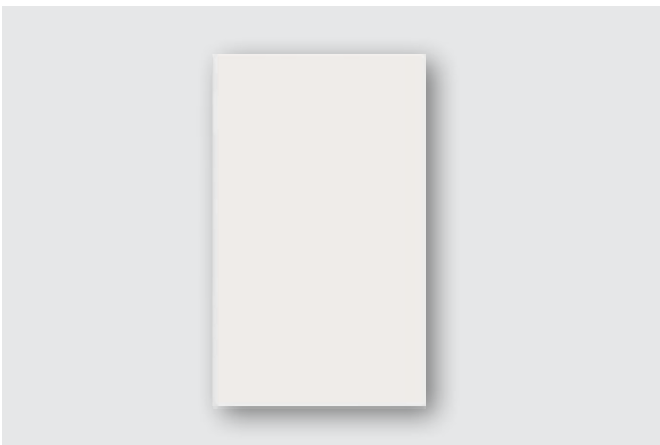
5 PIECE SHAKER DOOR

3-week lead time. Custom Sizes Available for Order.
Variety of Colors. Bywater.
Small Doors <48" H, Large Doors >48" H



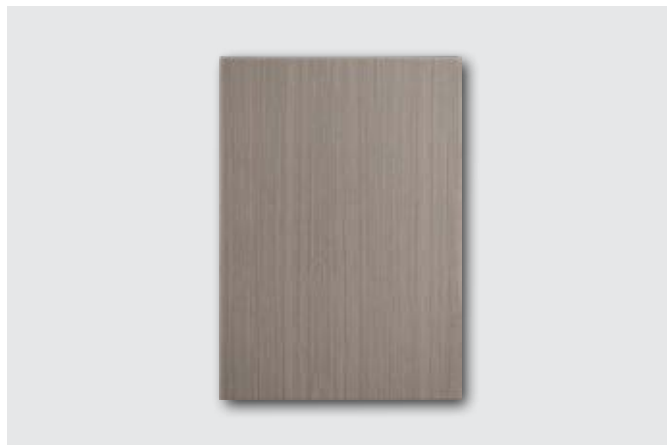
GLASS/MIRROR INSERT 5 PIECE

3-week lead time. Custom Sizes Available for Order.
Variety of Colors. Bywater.
Small Doors <48" H, Large Doors >48" H



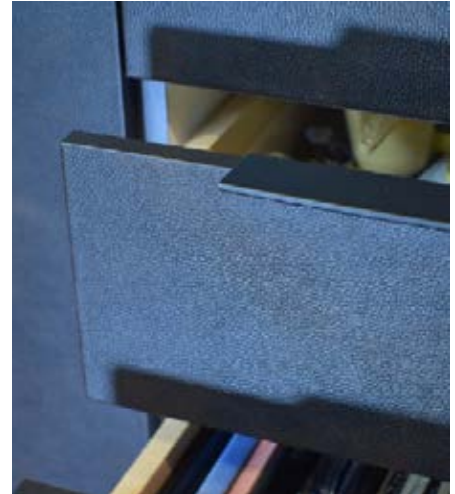
WHITE STANDARD FLAT DOORS

Flat Small Doors <48" H, Flat Large Doors >48" H



WOODGRAIN FLAT DOORS

Flat Small Doors <48" H, Flat Large Doors >48" H



ECODOMO

21-45 day lead time. Custom Sizes to order
Minimum purchase of 1.5 sq feet

- Fully Wrapped Slab Doors
- Fully Wrapped Slab Drawers
- 1" Countertops
- Drawer Liners
- One Sided Back Panels
- Double Sided Insert Panels
- Shelves





THERMOFOIL



Shaker Style

Raised Panel

THERMOFOIL DOORS

3-week lead time. Custom Sizes to order.

Soft Maple/Knotty Alder

Small Doors <48" H

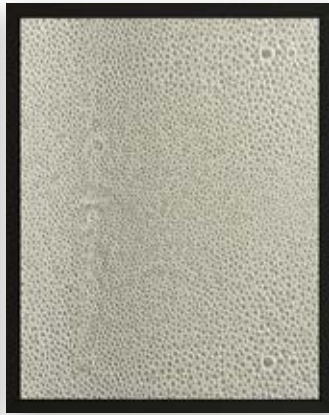
Large Doors >48" H



Frameless Glass Door,
Low-Iron Clear Glass



AF016, Gold, Low-Iron
Satin Glass



AF004, Black Matt,
Grey Stone Leather

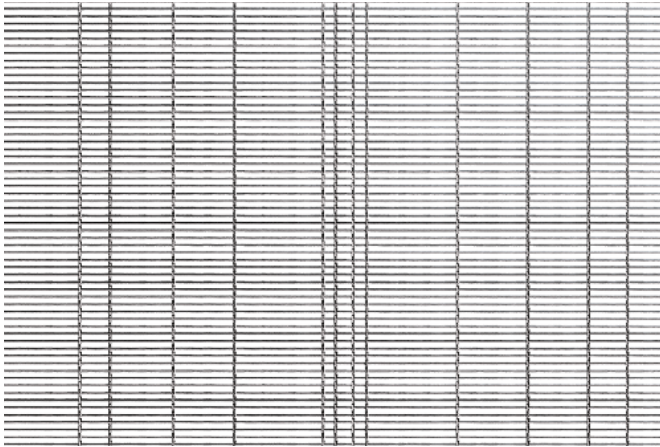


AF105, Gold, Quattro
Carbon Resin

ELEMENT DOORS

3-week lead time. Custom Sizes to order.
Custom Frame, Inserts, and Finishes





BAR CODE ITALIAN MESH

3-week lead time.

Full Sheet 015936116SS1



BENGAL ITALIAN MESH

3-week lead time.

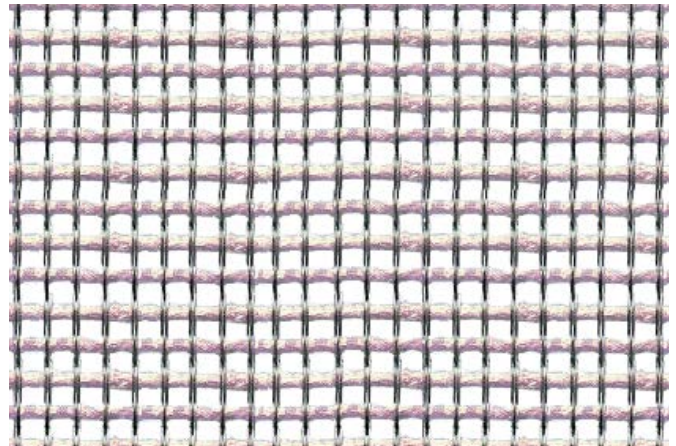
Full Sheet 015936118SS1



CHEVRON ITALIAN MESH

3-week lead time.

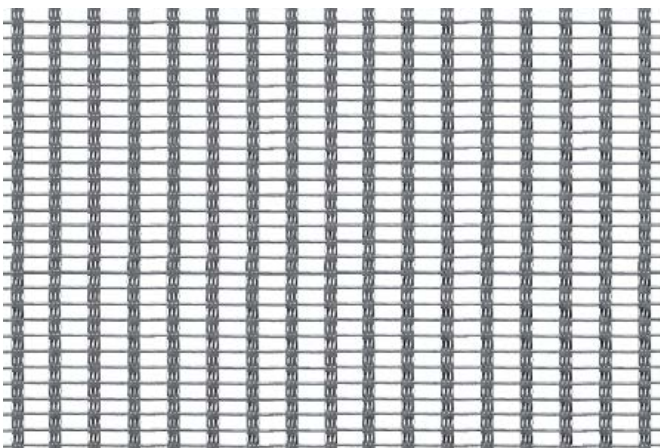
Full Sheet 015936107SS1



JUTE ITALIAN MESH

3-week lead time.

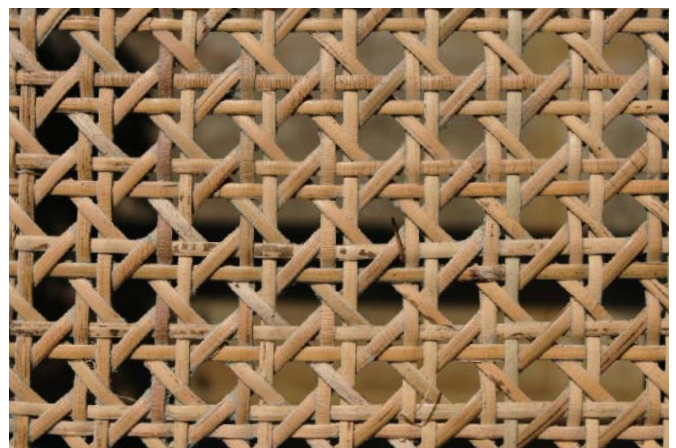
Full Sheet 015936102SS1



PINSTRIPED ITALIAN MESH

3-week lead time.

Full Sheet 015936104SS1



HEXAGONAL RATTAN WEBBING

3-week lead time.

Full Sheet 0124481202NT1

MESH INSERTS



.1875" GRILLE

3-week lead time.
Full Sheet 011848RE25AB1



.375" GRILLE

3-week lead time.
Full Sheet 011848286SAB1



.5" GRILLE

3-week lead time.
Full Sheet 011848CG10AB1



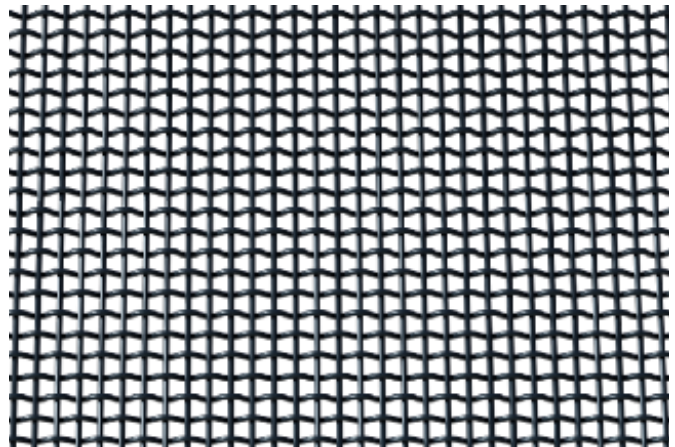
.75" GRILLE

3-week lead time.
Full Sheet 011848315CAP1



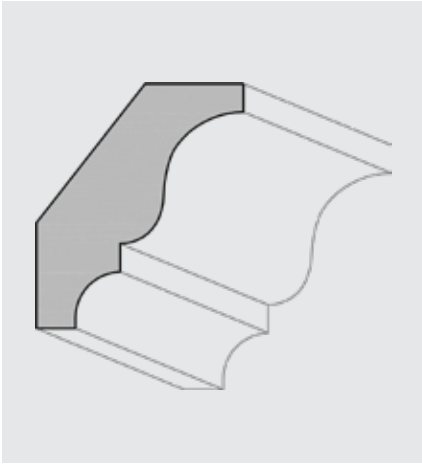
1" GRILLE

3-week lead time.
Full Sheet 01184811614PAB1

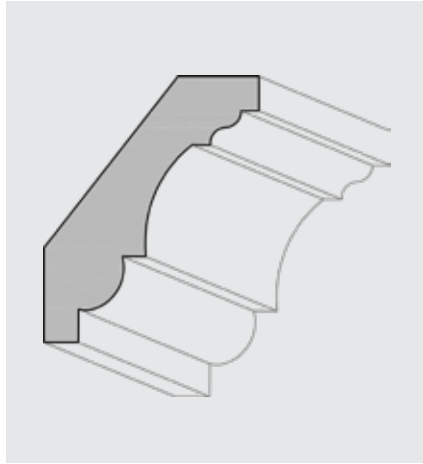


FINE WIRE GRILLE

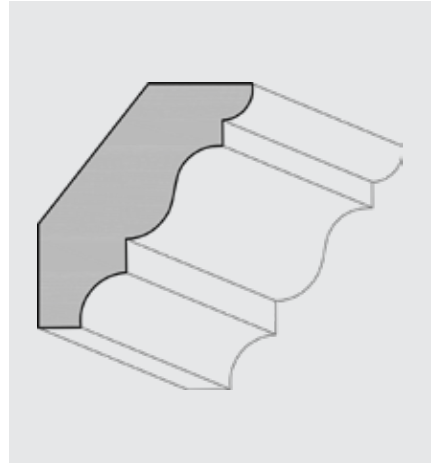
3-week lead time.
Half Sheet 012248MESHSB1
Full Sheet 014448MESHSB1



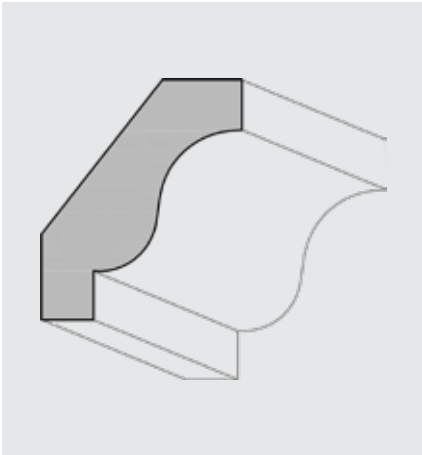
CROWN PATTERN #1



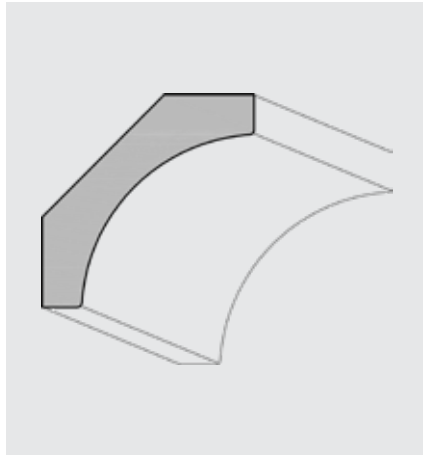
CROWN PATTERN #2



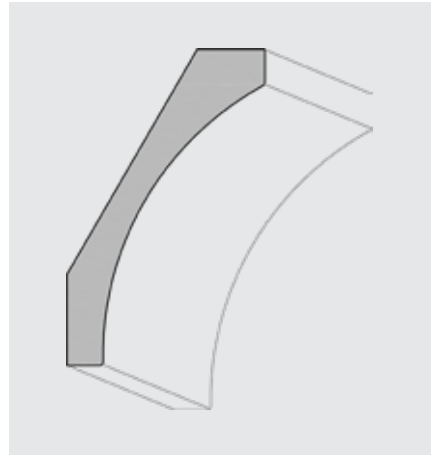
CROWN PATTERN #3



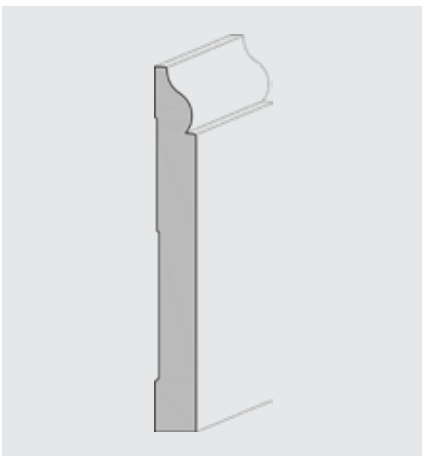
CROWN PATTERN #4



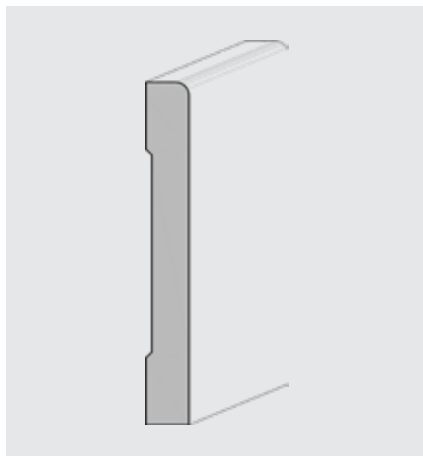
45° COVE MOLDING



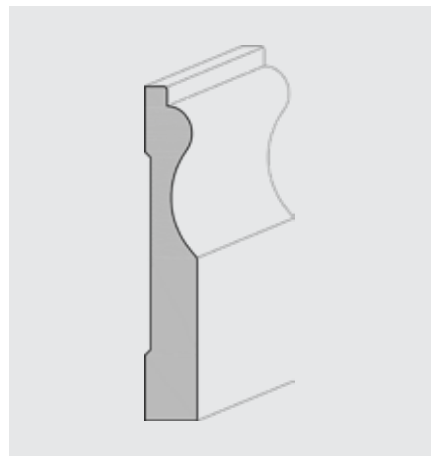
30° COVE MOLDING



B5 BASE



B13 BASE



B18 BASE

COUNTER TOPS



BUTCHER BLOCK
Heavea or Acacia



GLASS



STAINLESS STEEL



SOLID SURFACE
Choose Color with Designer

FLOATING SHELVES



MELAMINE



BUTCHER BLOCK
Heavea or Acacia
Wall mounting bar included



STAIN/PAINT GRADE

MORE



ECUBED SHELVES
Element Designs.



LIBRARY LADDER
Custom Quote Required



WALL BED SYSTEMS
Cielo of Italy - Queen, Full, or Twin



RUFFINO

CLOSETS

WE DO MORE THAN JUST BUILD CLOSETS

ruffinocustomclosets.com | 111 Campbell Blvd. Mandeville, LA | 985.809.7623